

INSTRUCTIONS

REVISION 04 November, 20 2018

Ranger XP Door Kit

Prior to installation, please verify if a revised version of this instruction sheet is available on Knowledge Center.

The following symbols may be used in this document.

WARNING

Indicates a hazardous situation which, if not avoided, could result in death or serious injury.



CAUTION Indicates a hazard which, if not avoided, could result in result in minor or moderate injury.

NOTICE

Indicates an instruction which, if not followed, could severely damage vehicle components or other property.

WARNING

- This kit is designed for specific applicable models only It is not recommended for units other than the one (those) for which it was sold.
- Torque wrench tightening specifications must strictly be adhered to.
- Always wear EYE PROTECTION AND APPROPRIATE GLOVES when using power tools.
- Unless otherwise specified, engine must be OFF when performing any operation on the vehicle.
- Always be aware of parts that can move, such as wheels, transmission components, etc.
- Some components may be HOT. Always wait for engine to cool down before performing work. To reduce the risk of severe injuries or death, read the safety labels and follow these rules. Door is not intended to retain and/or protect occupants.

ALWAYS

- Fasten your seat belt.
- Fasten lateral net.
- Keep your entire body inside the cockpit.
- Latch the door before riding.
- Transport this vehicle facing forward.
- Remove nets when using full doors.
- Do Not rest elbow on door while riding.
- Never operate UTV without either door or nets in place.



655 Elm Ridge Ave, Canal Fulton OH, 44614 Phone: (888) 769-2295

USE AND CARE INFORMATION:

- Completely read and understand the instructions before installing this accessory.
- To clean, sponge with mild soap and cold water, rinse with a hose and allow it to drip-dry.
- Do not machine wash or dry.
- Use mild detergent to remove stubborn stains.
- When not in use, the window roll up webbing strap can be tucked into the Velcro pocket.

The zipper should be cleaned using a toothbrush with soap and water and rinsed as needed to keep it free of dust and dirt. Once the zipper is cleaned, the teeth should be lubricated using beeswax.

NOTE: The illustrations/photos in this document show typical construction of the different assemblies and may not reproduce the full detail or exact shape of the parts; however, they represent parts that have the same or similar functions.

NOTE: Installation time is approximately 1 hour.

PARTS TO BE INSTALLED

Ranger XP Door Kit

Part No	Contents of Box	Quantity
N/A	Left Hand Door	1
N/A	Right Hand Door	1
P45-1075	Latch Left Side	1
P45-1076	Latch Right Side	1
P46-1127	Pull Handle	2
P49-1026	Foam Grip	2
P45-1260	Striker LHS	1
P45-1261	Striker RHS	1
P45-1280	Upper Hinge Vehicle LHS	1
P45-1281	Upper Hinge Vehicle RHS	1
P45-1264	Upper Hinge Door	2
P45-1282	Lower Hinge Vehicle LHS	1
P45-1283	Lower Hinge Vehicle RHS	1
P45-1267	Lower Hinge Door	2
N/A	Limiter Strap	2
N/A	Heat Shrinking Tubing	2
P46-1044	Latch knob	2
P47-1315	Eye-end Latch Cable Assembly	2
P47-1316	Screw Flange Head Cap Steel M6 x 1 x 16mm with a Hole	2
P47-1292	Washer Clear Zinc M6 6.6mm ID 22mm OD	2
P47-1359	M6 Nyloc Nut Zinc Plated	2
P47-1289	Bolt Hex Flanged Clear Zinc M6x1x16mm	10
P47-1293	Washer Black M8 8.4mm ID 16mm OD	26
P47-1294	M8 x 1.25 Flanged Nut Interference Thread Black	12
P47-1244	M8 x 20mm Button or Pan Head/Torx	26
P45-1268	Nut Plate Steel M8	2
P47-1335	Flat Washer Nylon Black .39" ID	4
P49-1027	Adhesive for Foam Handle Grips	1
P49-1013	Adhesive 1ml Pillow Pack Vibratite	1
IS58-9200	13-17 Ranger XP Door Set Instruction Sheet	1

TORQUE VALUES:

Tighten all screws, bolts, nuts to their specified torque values. Refer to the Service manual for the torque values of the removed parts

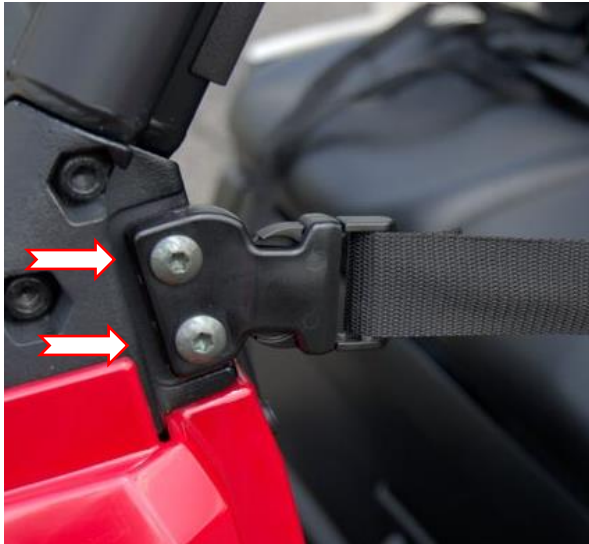
TOOLS REQUIRED:

- Gloves
- Safety goggles
- 10mm wrench
- 13mm wrench
- Heat gun or lighter
- T40 Torx driver
- Flat end screw driver
- #2 Philips head screwdriver
- Hand drill
- Ø.313 drill bit

INSTRUCTIONS

Vehicle preparation.

- 1) Remove (2) T40 Torx screws and remove SR buckle. Do not reinstall, keep with net and other hardware.



- 2) Remove 6mm bolt that secures net. Retain bolt with net and other hardware.



- 3) Using flat head screwdriver, as shown, remove rubber plug to allow removal of front lower net rod.



- 4) Remove lower T40 Torx screw on unit floor (net bracket). After removing net bracket, reinstall Torx screw.



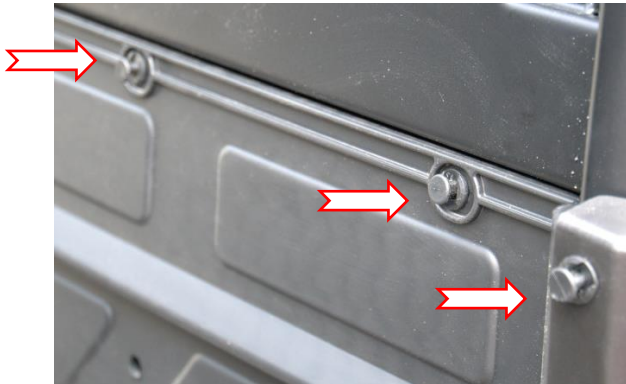
- 5) Remove upper (2) T40 bolster screws and set aside for use later.



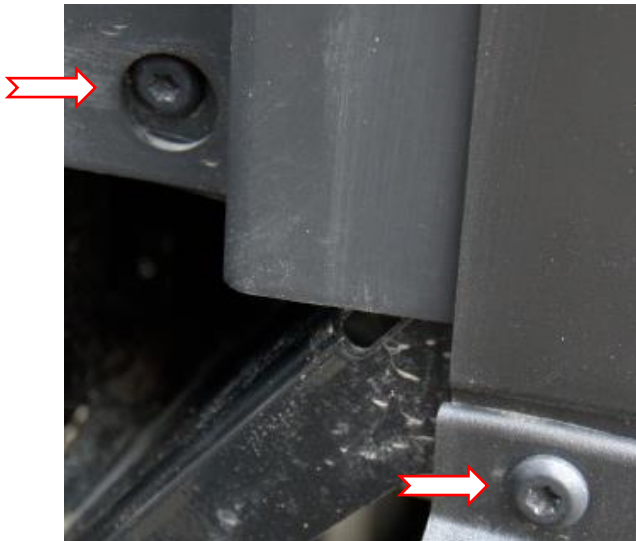
INSTRUCTIONS

Vehicle preparation continued.

- 6) Remove 3 upper darts on rear panel.
Set aside, these will be reused.



- 7) Remove 2 lower T40 Torx screws and set aside to reuse.



- 8) Loosen hose clamp on left hand side



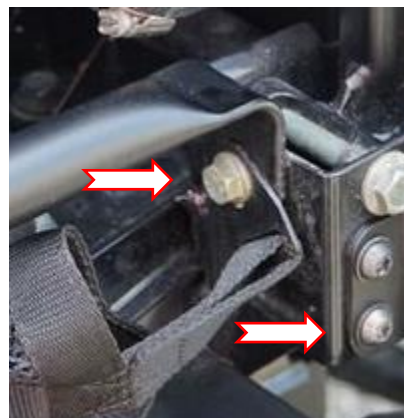
- 9) Remove seatbelt mechanism.



- 10) Remove ROPS cover.



- 11) Remove 8mm. lower bolt for net and bolster bar.



- 12) Remove net and reinstall bolster bar using 8mm bolt previously removed.

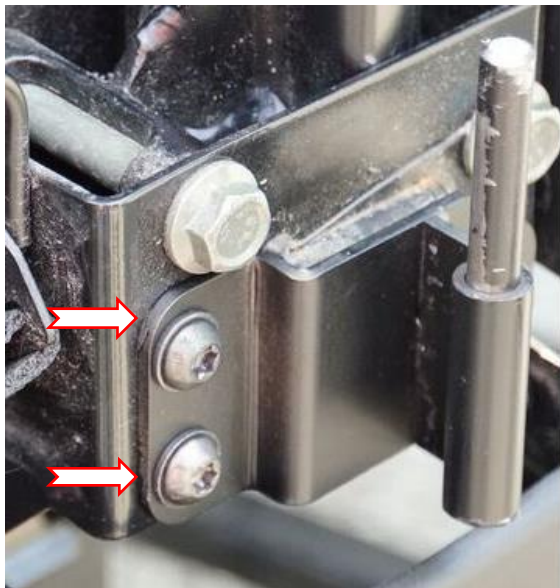
INSTRUCTIONS

Vehicle preparation continued.

- 13) On lower ROPS cover, cut out at indicated lines on lower portion of cover.



- 14) Install lower left-hand side hinge bracket. Center bracket on Torx screws front to back and torque the (3) 8mm screws to 16 ft./lbs.

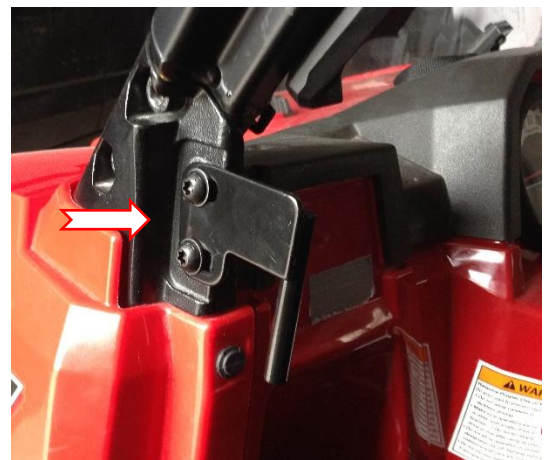


- 15) Install left ROPS cover and attach using previous hardware removed. Tighten hose clamp.

- 16) Install upper rear hinge to unit using M6X16MM flanged hex bolts and M6 Nut plate. Loosely tighten to allow adjustment before final tightening.



- 17) Install front striker using M8 bolts & M8 washers. Loosely tighten to allow adjustment before final tightening.

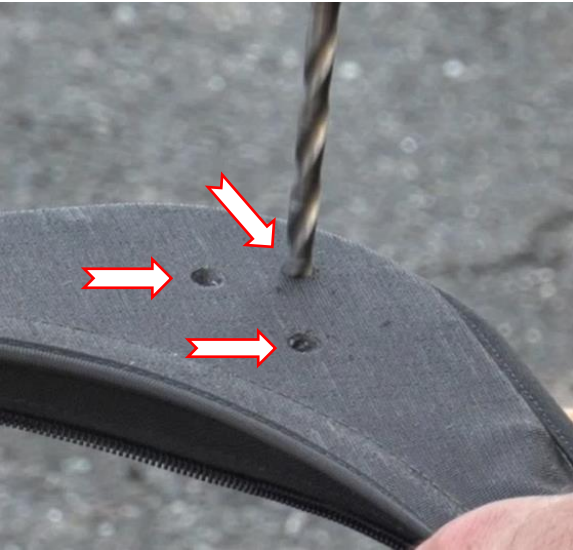


INSTRUCTIONS

Door preparation

- 18) Locate the (3) bracket mounting holes at the upper rear of the door. Mark location. Cut or drill out.

NOTE: The drill needs to go counter clockwise (in reverse) Going Clockwise may cause the drill to catch the fabric and tear.



- 19) Repeat step 16 for the lower rear hinge mounting location.

- 20) Install brackets to door with M8 Torx bolts, M8 washers & M8 flanged hex nuts.



Upper hinge



Lower hinge

- 21) At handle locations shown, mark area on fabric for (3) 6mm bolt to go through. Using #2 Philips head screwdriver punch holes through the fabric at previously marked location.



- 22) At shown location, use razor to cut out rectangular cut for door handle.



- 23) Install door handle using (3) 6mm bolts. The 6mm bolt at the rear of the handle gets a 6mm fender washer.



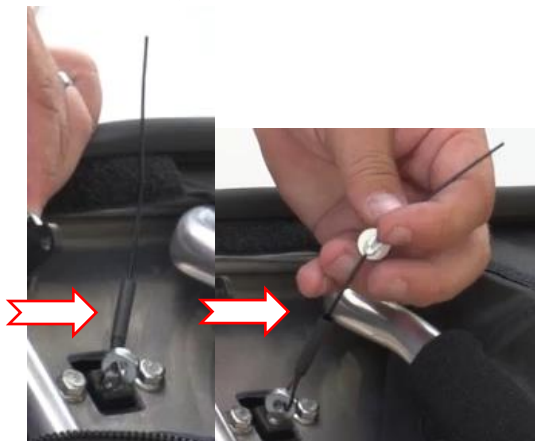
INSTRUCTIONS

Door preparation continued.

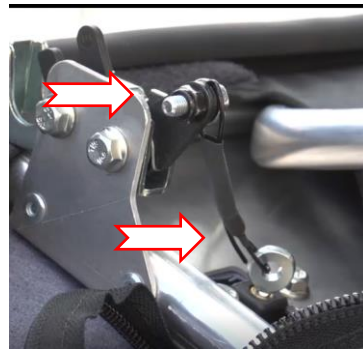
- 24) Lightly coat door frame handle with supplied adhesive and slide foam grip onto frame handle. Put cap on end of handle.



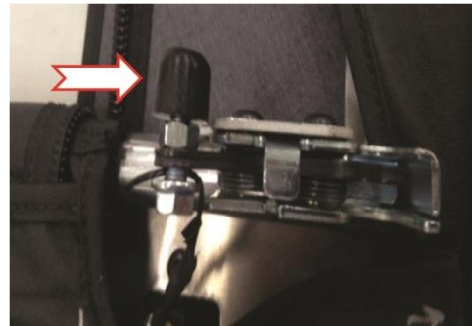
- 25) Slide shrink wrap tubing onto door handle cable. Insert cable through 6mm flange bolt with hole.



- 26) Insert bolt with cable up through rotary latch. Install 6mm locknut. Adjust cable so it has about ¼" slack and tighten locknut. Insert open end of cable through shrink tube. Heat shrink with heat gun or lighter.



- 27) Install knob as shown, hand tighten.



- 28) Loop door limiter strap around frame tube and back through loop on limiter strap. Insert end of limiter strap through slot on inner side of door skin.



INSTRUCTIONS

Install Doors on vehicle and adjust.

- 29) Slide door down onto unit hinges.



- 30) Un-zip window, fold to the outside to allow access to rotary latch from outside.



- 31) Close door, but do not latch. Leave approximately 1" between ROPS and front door frame.

- 32) Push rear door frame back tightly against unit ROPS. While holding tight, tighten upper and lower rear door frame hinges.

- a. Door skin has small zipper to allow access to above mentioned frame hinges. Once these have been adjusted and tightened, zip door skin.



- 33) Close door and whole holding front of door tight to ROPS, tighten (2) 6mm rotary latch bolts.

NOTE: Door latch has 2 closing positions. Please be sure that latch clicks twice for fully closed position.

- 34) Open door and torque (2) striker screws to 16 ft/lb/

- 35) Attach limiter strap on door to hip restraint.

- 36) Repeat steps for opposite side.

- 37) Reinstall rear panel.

NOTE: Please be sure that rear panel sits between ROPS and ROPS outer cover. Please be sure that all 3 air tubes are installed and all clamps are tightened.